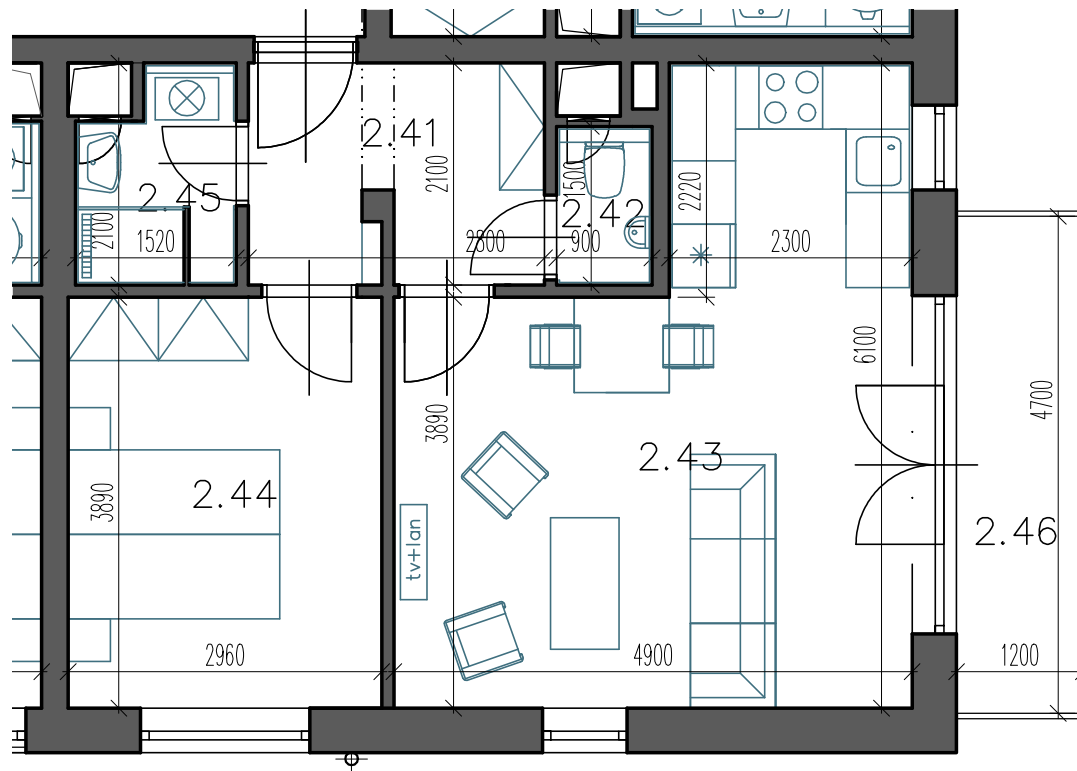
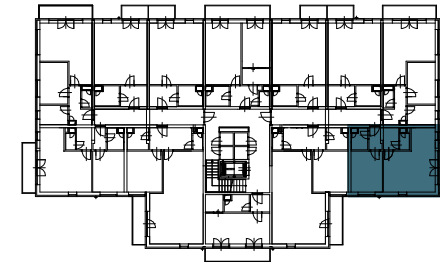


byt 2.10



dispozice 2+KK
podlaží 2. NP
užitná plocha 49,20 m²

2.41 předsíň 5,70 m²
2.42 WC 1,40 m²
2.43 pokoj s KK 24,82 m²
2.44 ložnice 11,52 m²
2.45 koupelna 2,82 m²

2.46 balkon 5,64 m²